



Parts List for No.1712 & 1712J Sioux Heavy Duty Driver Serial "C"

When Ordering Parts, Specify Model Number and Serial Number

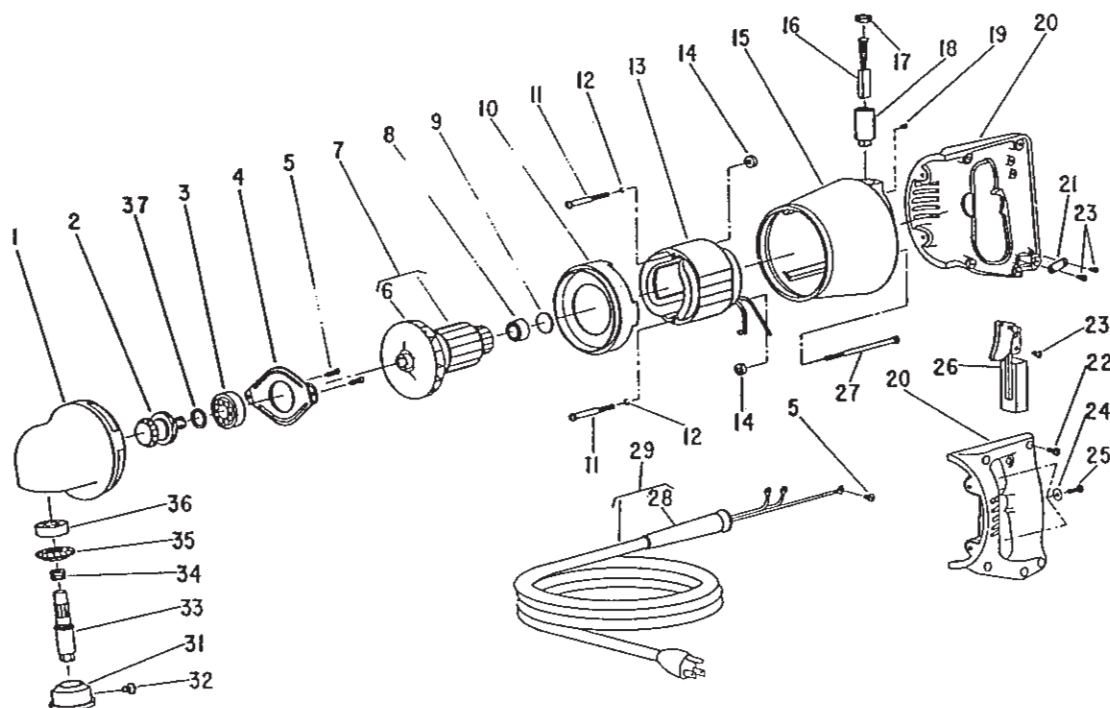


Fig- ure	Part No.	Name
1	12002	Case—Gear
2	19607	Assy.—Pinion & Slinger
3	10290	Bearing—Ball
4	25027	Lock—Bearing
5	07204	Screw—Sems Phil Rd. Hd. #10—24x5/16 (3)
6	21565	Fan
7	28971	Armature—With Fan (115V.) (1712)
	28971J	Armature—With Fan (230V.) (1712J)
	16872	Armature—With Fan & Brgs. (115V.) (1712)
	16872J	Armature—With Fan & Brgs. (230V.) (1712J)
8	10931	Bearing—Ball
9	35232	Slug—Bearing Knock—Out
10	12063	Extension—Housing
11	07137	Screw—Phil Fil Hd. #10—24x2 3/4 (2)
12	09724	Washer—Lock #10 (2)
13	28994	Field Motor (115V.) (1712)
	28994J	Field Motor (230V.) (1712J)
14	64055	Spacer—Field (2)
15	12339	Housing (Includes Fig's. 18, 19)
16	18004	Brush (2)
17	18120	Cap—Brush Holder (2)
18	18076	Holder—Brush (2)

Fig- ure	Part No.	Name
19	07000	Screw—Cup Pt Set #10—24x3/16 (2)
20	53033	Assy.—Handle
21	35233	Strap
22	06370	Screw—Phil Truss Hd. #6—32x1/2 (5)
23	06371	Screw—Phil Truss Hd. #6—32x3/8 (3)
24	35234	Washer—#10 (4)
25	07223	Screw—Phil Pan Hd. #10—24x4 5/8 (4)
26	18204	Switch
27	07126	Screw—Phil Fil Hd. #10—24x4 5/8 (4)
28	04219	Relief—Strain
29	18416	Assy.—Cord & Terminals (115V.) (1712)
	18418J	Assy.—Cord & Terminals (230V.) (1712J)
31	23694	Assy.—Bearing Support
32	08279	Screw—Phil Rd Hd. 1/4—20x1/2
33	22916	Spindle—Tool
34	21214	Spring—Tension
35	19058	Gear—Spiral Bevel
36	10113	Bearing—Ball
	20057	Plate—Name (115V.) (1712)
	20057J	Plate—Name (230V.) (1712J)
	09954	Screw—Delve Type J #0x3/16 (2)
37	54768	Spacer

**SIoux
TOOLS INC.**

2901 FLOYD BOULEVARD ■ SIOUX CITY, IOWA 51102 ■